

MINTT MASK & ANTI-AGING TRAINING



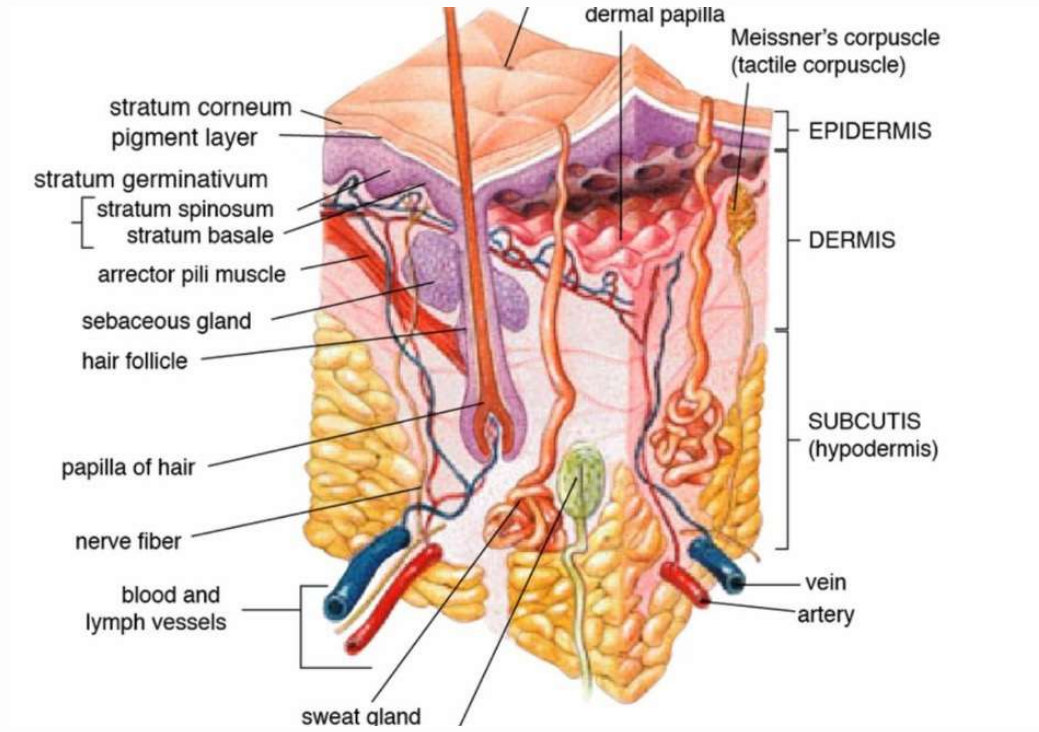
DS V-LINE

Introducing the exclusive
DNA MINTT MASK, the only one of its
kind in the world, enriched with **Fillers**
and
Botox content.

FIRST, LET'S REVISIT THE BASICS OF SKIN ANATOMY

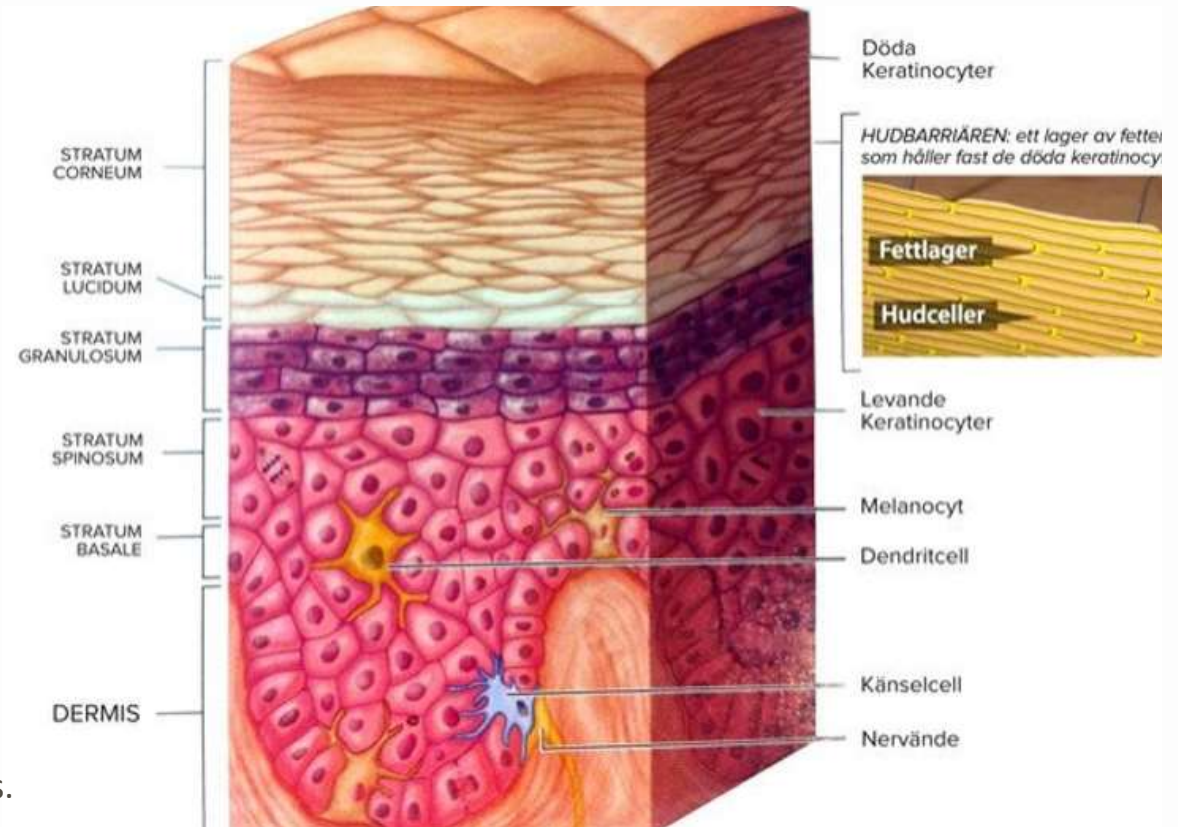
Skin Layers:

- Epidermis
- Dermis
- Hypodermis- Subcutis



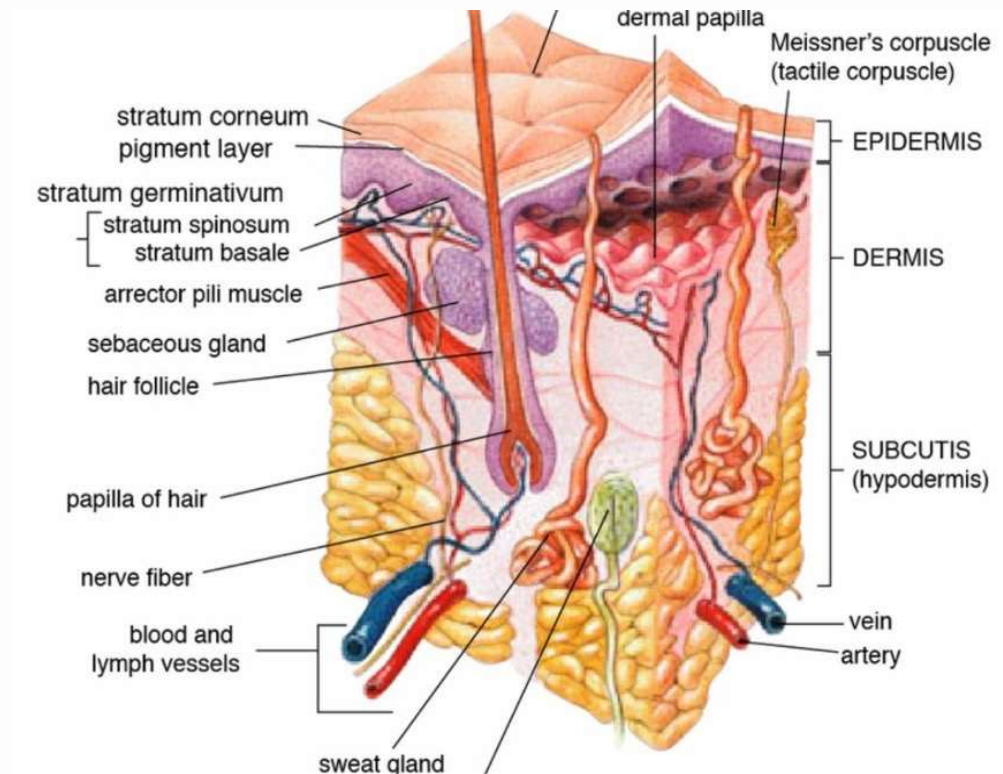
THE STRUCTURE OF THE EPIDERMIS

- The epidermis is divided into five distinct layers.
- They contain keratohyalin granules within them.
- The increase in these granules leads to progressive cell degeneration and cell death.
- The keratinized dead cells (corneocytes) are shed from the stratum corneum after approximately 2 weeks.
- The time it takes for a keratinocyte to traverse all layers and become a lifeless layer of keratin is called "skin turnover"
- They are located between keratinocytes at the junction of the epidermis and dermis, extending like the arms of an octopus to the keratinocytes in the upper layers of the epidermis.
- They transport the melanin pigment they produce to these cells.
- Melanin is positioned on the nuclei of keratinocytes, acting as an umbrella over the cell nucleus to protect cell chromosomes from the sun (they shield DNA from UV rays).

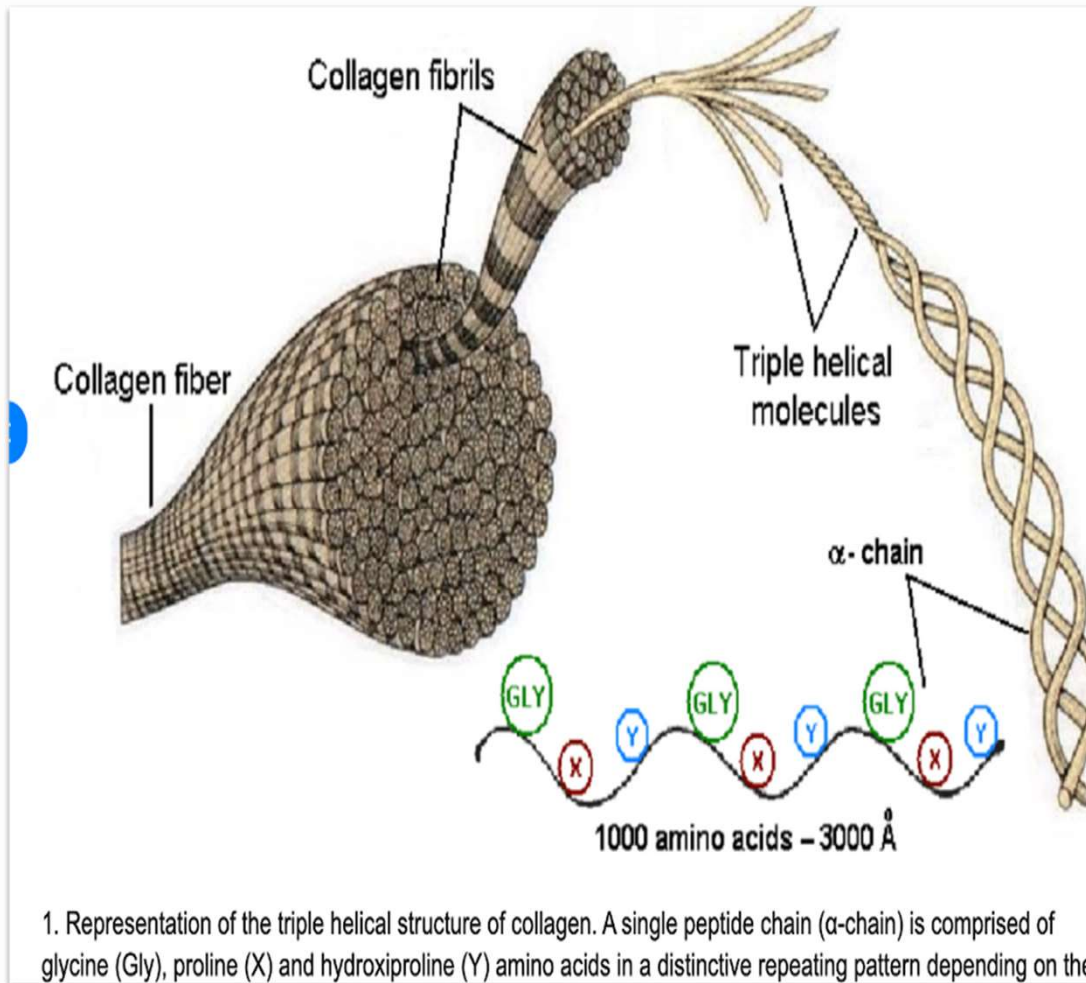


THE STRUCTURE OF THE DERMIS

- In the dermis, the main cells are fibroblasts, which produce the extracellular support matrix tissue of the dermis.
- This matrix structure consists of collagen, elastin, and reticular fibers.
- The dermis also hosts other cells such as macrophages and mast cells, which are part of the defense system.
- Collagen in the dermis provides the skin's tensile strength.
- Elastin provides elasticity to the skin. These two, collagen and elastin, constitute the fibrillar support tissue of the dermis.



COLLAGEN

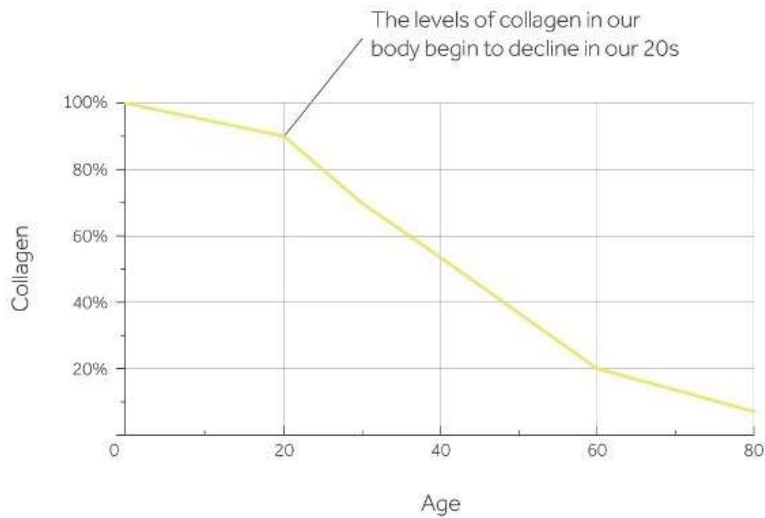


Collagen Fibers

- They are the basic components of the dermis.
- It comprises approximately 70% of the dry weight of the dermis.
- It provides strength and elasticity to the skin through the network it forms in the dermis.
- Three collagen fibers come together to form a collagen bundle.

SKIN AGING

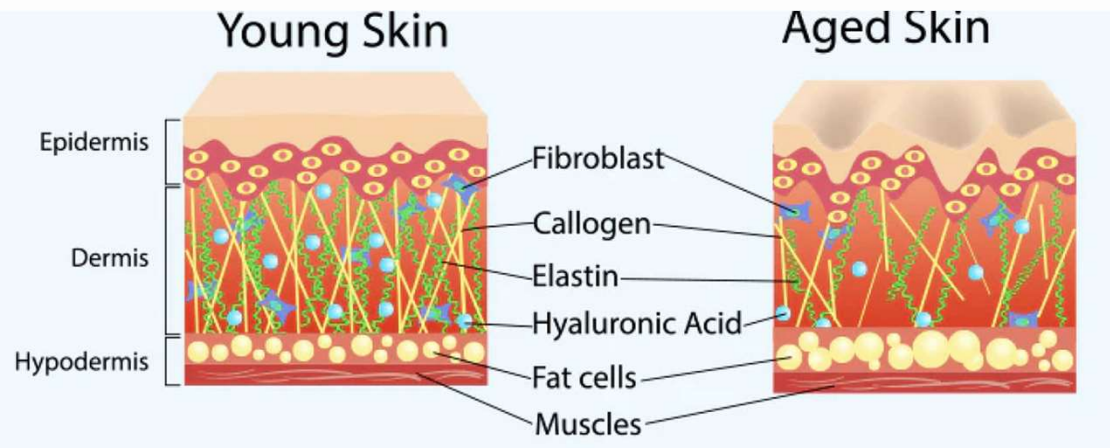
COLLAGEN LEVELS AND AGE



A rapid decline in collagen levels begins during menopause. Following menopause, there is also a marked reduction in elastin, and the skin tends to become drier. This occurs because hyaluronic acid production significantly diminishes

We cannot prevent this loss; however, we can support the sustainability of existing structures through various techniques.

The loss of elasticity commonly results in sagging. By naturally supplying the skin with essential substances, we encourage its ability to repair itself



AN IN-DEPTH LOOK AT THE MAIN CAUSES OF SKIN WRINKLES

01 Fibrillin

02 Proteoglycans and Glycosaminoglycans (GAGs)

03 Fibroblast Activity

04 Keratin

05 Matrix Metalloproteinases (MMPs)

06 Antioxidant Levels

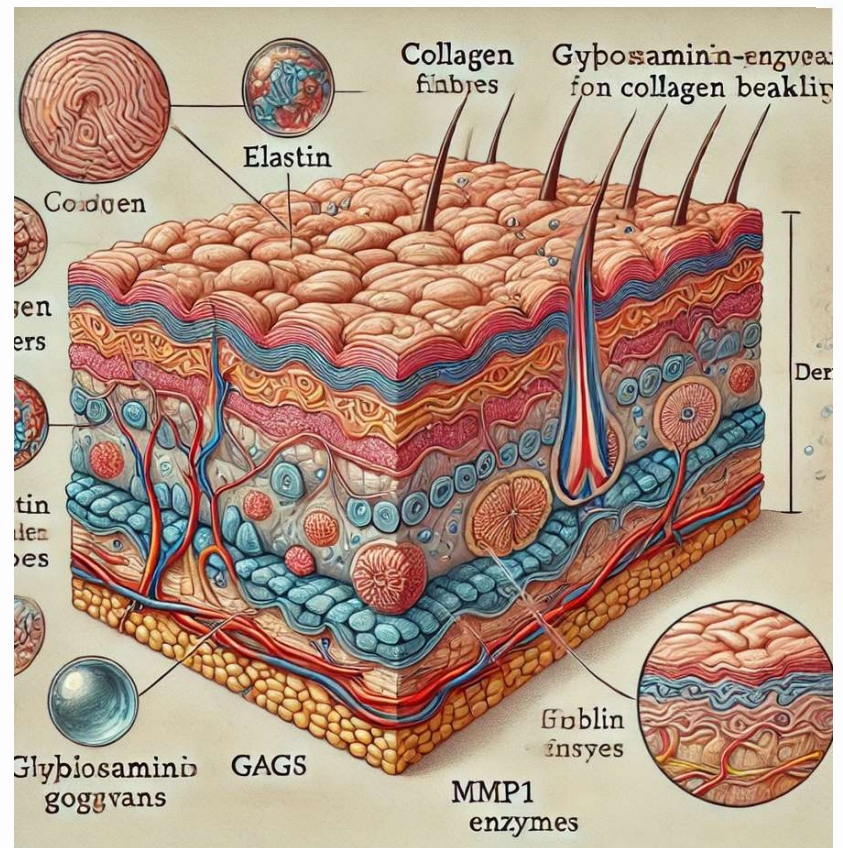
07 Melanin

08 Lipids

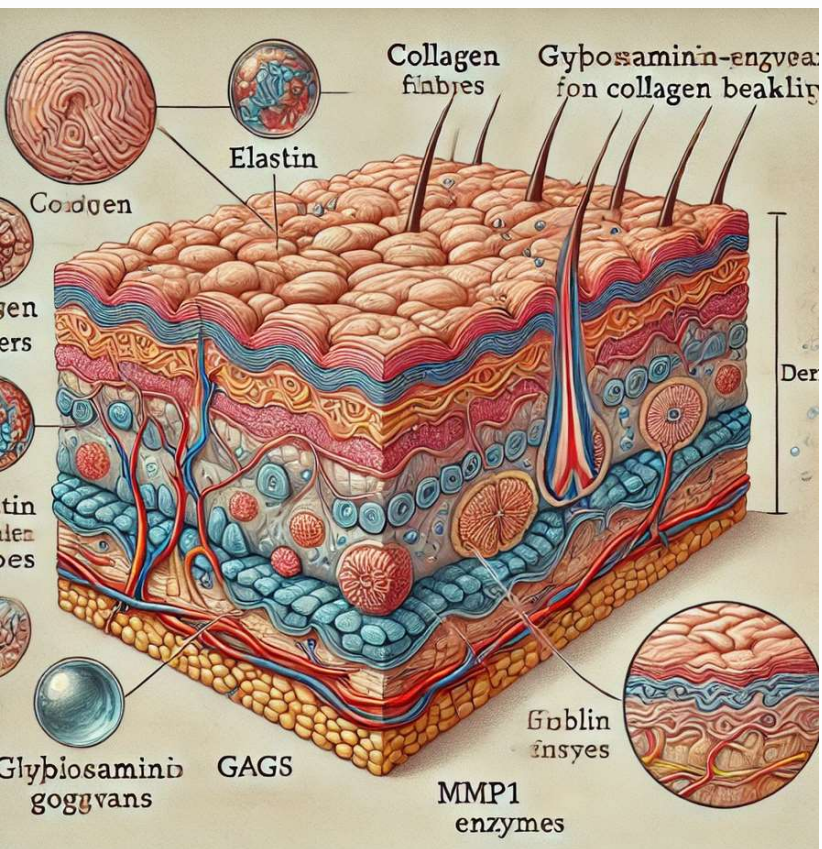
09 Immune Response

10 Hormones

11 Skin Circulation



- 01 **Fibrillin**
This protein supports elastic fibers, and its reduction leads to a loss of elasticity, which accelerates wrinkle formation.
- 02 **Proteoglycans and Glycosaminoglycans (GAGs)**
These help maintain skin hydration; dermatan sulfate, keratan sulfate, and heparan sulfate are abundant in the dermis, but they decrease with age, causing the skin to lose its plumpness.
- 03 **Fibroblast Activity**
The production of fibroblast cells, responsible for creating collagen and elastin, decreases with age. Reduced fibroblast activity leads to diminished elasticity and strength in the skin.
- 04 **Keratin**
Keratin proteins in the outermost skin layer deteriorate over time, weakening the skin's protective barrier and making wrinkles more noticeable.
- 05 **Matrix Metalloproteinases (MMPs)**
MMP enzymes break down collagen and elastin. Their activity increases with age, resulting in a loss of skin firmness.



Antioxidant Levels

06

Levels of antioxidants like glutathione, vitamin C, and vitamin E decrease in the skin. This reduction allows free radicals to damage the skin and contribute to wrinkle formation.

Melanin

07

Melanocyte cells gradually decline, leading to uneven pigmentation. This results in spots and structural irregularities that disrupt the skin's smooth appearance.

Lipids

08

Lipids such as ceramides and fatty acids that support the skin barrier decrease with age, causing the skin to lose moisture and making wrinkles more prominent.

Immune Response

09

As the skin's immune system weakens with age, inflammation processes increase. This chronic inflammation disrupts skin structure and leads to more pronounced wrinkles.

Hormones

10

The decrease in estrogen particularly leads to collagen loss. Changes in testosterone and DHEA levels also affect skin quality, deepening wrinkles.

11

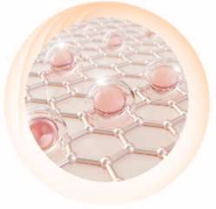
Skin Circulation

Circulation weakens over time, resulting in reduced oxygen and nutrient delivery to skin cells. This causes a loss of elasticity and wrinkle formation.

These processes and components collectively cause the skin to lose structural integrity and elasticity, ultimately leading to the formation of wrinkles.

OUR GOAL IS TO ENHANCE SKIN QUALITY AND HEALTH THROUGH A HOLISTIC APPROACH, UTILIZING DS V-LINE'S EFFECTIVE PRODUCTS AT EVERY STEP TO HELP DELAY SIGNS OF AGING.

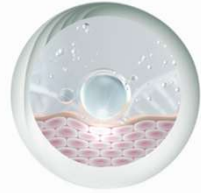
PROTOCOLS



DS V-LINE Collagen Thread

Anti-Aging Technique

It delivers a powerful anti-aging effect with a rich blend of **collagen peptides, amino acids, and vitamins and silk fibrils.**



DS V-LINE Hya Thread

Water Retention Technique

With its blend of **7 different types of hyaluronic acid**, it naturally restores volume to the skin. The acetylated form of hyaluronic acid blocks the **MMP1** enzyme to prevent collagen breakdown, effectively providing volume while also slowing the aging process.



DS V-LINE Meso Shine

Brightening Peptide
Technique

With its unique blend of **51 active ingredients**, it enhances **skin barrier**, helps **balance melanin synthesis**, and supports increased **fibroblast activity**



DS M-LINE Massage

Tightening Massage
Technique

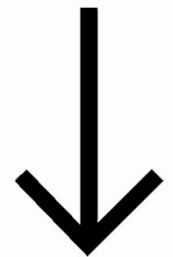
Our specialized acupressure massage technique **pushes toxins** toward the lymphatic drainage channels while enhancing **skin circulation**, promoting better **nutrient and oxygen supply** to the skin. By strengthening the facial muscles, it also creates a **lifting effect**

All techniques can be combined based on the skin's needs. The key is conducting an accurate analysis!



DS V-LINE Mintt Mask

Anti-Aging Technique



THE MIRACLE MASK TECHNIQUE

With an unprecedented formula, the Miracle Barrier Mask is designed to improve sagging skin and restore elasticity.

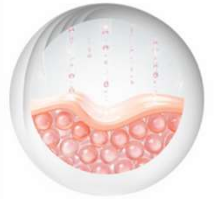
It provides a powerful lifting effect, enhancing facial contours for those concerned about saggy cheeks, double chin, or deep nasolabial folds.

This mask offers unique advantages for professionals with its specialized steps, eliminating the need for invasive treatments.

Unlike other masks, it maintains its lifting effect for an extended period and boosts skin elasticity.

The protocol features M.I.N.T.™ thread for strong wrinkle-lifting and volume enhancement, along with PCL, raw collagen, and silk amino acids to promote collagen production and improve skin tone.

With its innovative approach, the Miracle Barrier Protocol allows professionals to deliver the benefits of thread lifting effectively.



DS V-LINE Mintt Mask

Anti-Aging Technique



KEY INGREDIENTS

Choosing the right ingredients tailored to the skin's needs is the first step toward success. To achieve this, we must have a thorough understanding of the products we use and apply the correct ingredients after conducting an accurate analysis.

[Before we move on to the steps of the technique, let's take a look at the ingredients.](#)

Lifting treatment to incorporate melting threads of medical-grade PCL into a mask.

Medical lifting ingredients PCL, raw collagen, and natural silk amino acids are absorbed by the skin to induce cell and collagen synthesis, resulting in healthier, firmer skin with more overall elasticity and volume.

It also contains Acetyl Hexapeptide-8, Glutathione, and PDRN to rebuild the broken skin barrier for intensive moisturizing and to help regenerate and firm skin.

The first mask, a lattice-structured melting thread mask, lifts collapsed skin lines, while the second mask, a melting gel mask, delivers highly concentrated nutrition to the skin.

MINTT MASK

A box of a mask containing a 2-step application; includes spider web mask, skintox gel mask, and mist ampoule, each for 3 applications.

Thanks to its powerful content, it provides a visible lifting effect from the first application. It reduces fine lines, is effective on pigmentation problems, and helps the skin to glow.



Spider Web Mask Contents

- Sodium Hyaluronate
- Collagen
- Hydrolyzed Collagen
- Polycaprolactone
- Silk Amino Acid

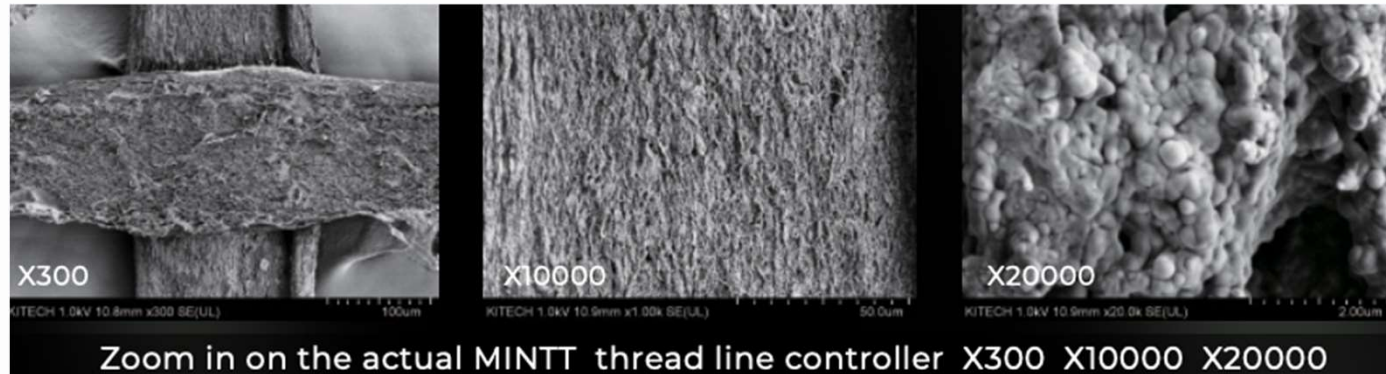
Mist Ampoule Contents

- Soluble Collagen
- Niacinamide
- Adenosine
- Betaine
- Ceramide NP
- Hydrolyzed Hyaluronic Acid
- Centella Asiatica Extract
- Pearl Extract
- Oligopeptide 29/32
- Copper Tripeptide 1
- Pentapeptide 4
- Acetyl Hexapeptide 8 (Argireline)
- Stearic Acid

Gel Mask Contents

- Niacinamide
- Adenosine
- PDRN (Salmon DNA)
- Collagen
- Chondrus Crispus Extract (Seaweed Extract)
- Allantoin
- Pear Fruit Extract
- Glutathione

01 SPIDER MASK



PCL (Polycaprolactone)

PCL stands for Polycaprolactone and is a biodegradable and biocompatible polymer, or medical polymer. PCL is classified as GRAS (General Recognized As Safe) by the U.S. FDA, and it is safe because it is used in many medical devices such as U.S. FDA and CE. It is more durable, softer, and has a longer absorption time than POD and PLLA, which are used for conventional thread lifting, making it a more advanced thread lifting procedure in a single procedure. After PCL is absorbed into the body, it is encapsulated by collagen and escapes phagocytosis, inducing the production of new collagen. It has already been proven in clinical trials around the world to have the ability to produce new collagen and is currently used as the main ingredient in fillers. PCL begins to slowly degrade after the procedure, and at the same time, it begins to form collagen.

Raw Collagen & Hydrolyzed Collagen

Collagen is one of the most important proteins in the human body, a major component of the skin and plays an important role in giving skin its elasticity. Collagen acts as the glue that holds cells together and plays an important role in maintaining the elasticity and density of cells to keep them in shape. In your late 20s, your skin begins to go through a longer renewal cycle, which reduces its ability to produce collagen. This is when the skin loses its elasticity and begins to wrinkle. When applied to the skin, raw collagen is absorbed by the skin and helps the body produce new collagen, nourishing, moisturizing, and firming the skin.

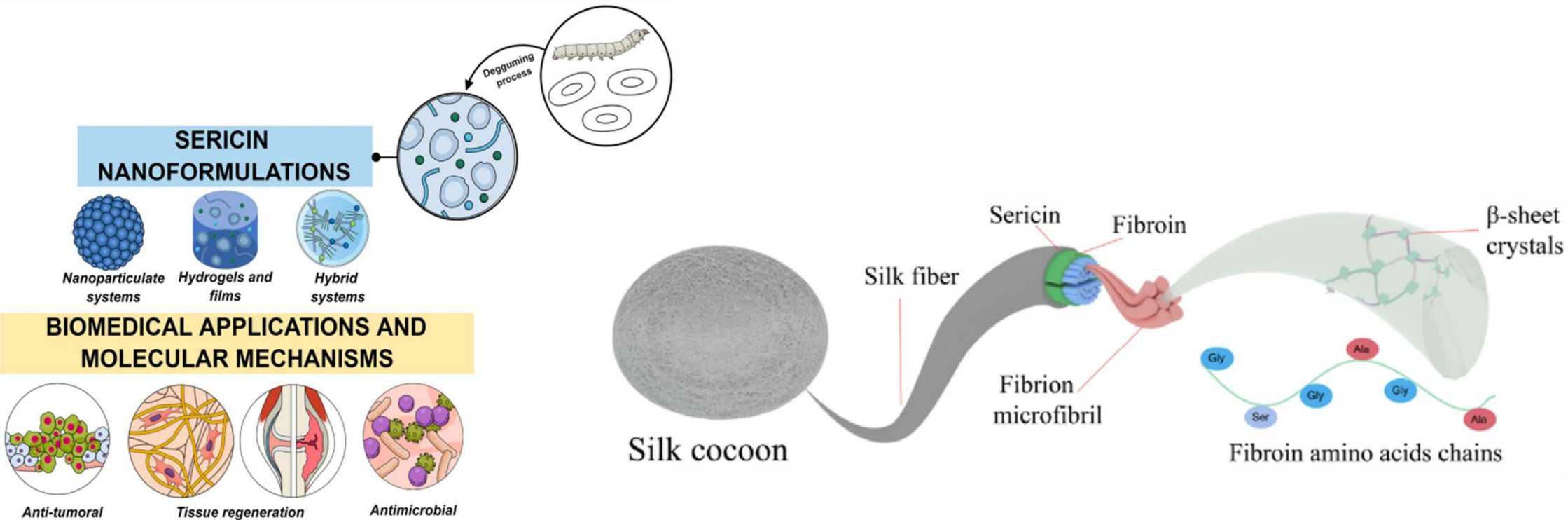
01 SPIDER MASK

Silk Amino Acids

Silk Amino Acids is an amino acid blend derived from the complete hydrolysis of silk from cocoons to extract the high-quality proteins sericin and fibroin, which are hydrolyzed and separated into 18 amino acids.

It contains high amounts of glycine, proline, and alanine, which are components of collagen and elastin that maintain elasticity, and has 18 amino acids similar to those in the skin, so it has excellent skin absorption and affinity, making it effective for skin nourishment and skin regeneration.

It also helps to whiten fine lines, shrink pores, and suppress melanin pigment.



02 MIST AMPOULE

It is a serum rich in peptide content such as **Oligopeptide 29/32, Copper Tripeptide 1, Pentapeptide 4, Hexapeptide 8**. It promotes cell renewal, collagen production, protects against free radicals with its antioxidant property, prevents premature aging, removes dark spot problems, and moisturizes due to its peptide content.

Niacinamide: A derivative of Vitamin B3. It is an effective component in skincare. Strengthens the skin barrier, evens skin tone, reduces acne and pimples, and tightens pores.

Adenosine: A molecule formed by the combination of adenine base and ribose sugar, which is a nucleoside. It plays a role in cellular energy metabolism. Used to reduce wrinkles and achieve a younger appearance.

Stearic Acid:

Ceramide NP:

Hydrolyzed Hyaluronic Acid:

Betaine: An amino acid derivative that reduces irritation for sensitive skins, soothes, and increases moisture retention ability.

Pearl Extract: Found in pearl shells. Used to balance skin tone, brighten the skin, and help reduce pigmentation problems.

Hydrogenated Lecithin: A natural emulsifier obtained from plant sources. Used to provide a harmonious balance between skin and oil phases. It also has moisturizing properties.

Centella Asiatica Extract: A plant called a miracle grown in Asia. Used in skincare products and medicines due to its many benefits to the skin. It has important properties such as anti-inflammatory, moisturizing, antioxidant, wound healing, and increasing collagen production.

02 MIST AMPOULE

Throughout this special content, let's focus on **ARGIRELINE**

Argireline (Acetyl Hexapeptide 8) is often referred to as a "**Botox alternative**" due to its similar effects in reducing the appearance of wrinkles and fine lines. However, the relationship between Argireline and Botox lies primarily in their mechanisms:

Mechanism of Action:

- Botox (Botulinum Toxin Type A): This is an injectable treatment that temporarily paralyzes the muscles that cause wrinkles, particularly in areas like the forehead and around the eyes. It blocks the nerve signals to the muscles, preventing contractions.
- Argireline: This is a topical peptide that mimics a portion of the protein found in Botox. It works by inhibiting the release of neurotransmitters that trigger muscle contractions, although its effect is much milder than that of Botox.

Efficacy:

- While both aim to reduce the appearance of wrinkles, Botox typically provides more immediate and dramatic results, while Argireline may require consistent use over time for noticeable effects.

03 GEL MASK

PDRN (Salmon DNA)

PDRN is a fragment of DNA extracted from salmon that is 95% similar to human DNA and contains tissue repair substances that help the body heal wounds. The DNA component extracted from salmon sperm is harvested in a very small amount, about 5-10 ml per salmon. This trace amount of DNA is extremely valuable for pharmaceuticals. PDRN helps skin regeneration, moisturizing nutrition, and skin improvement, and when used medicinally, it has a special effect on regenerating tissues in the body such as ligaments, tendons, and skin and relieving inflammation.

Glutathione

Glutathione reduces melanin production, which can help even out skin tone and reduce dark spots and pigmentation. Glutathione may also have a positive impact on skin health by boosting the immune system.

Chondrus Crispus Extract (Seaweed Extract): A seaweed extract obtained from red algae species. Provides moisturizing and skin softening properties. It is an antioxidant.

Allantoin: A plant-derived compound. It has anti-inflammatory and wound healing properties. Moisturizes the skin and increases its brightness.

Pear Fruit Extract: A plant extract obtained from pear fruit. It has antioxidant properties. Used to increase skin brightness, even out color, and reduce wrinkles.



DS 10FACE SERUM EFFECTIVE MESOTHERAPY



DS.10 Serum reduces wrinkles with its 7 herbal extracts and offers a healthier and brighter skin complexion. It also supports the skin's renewal process and evens out skin tone.

- Provides stress-free skin.
- Addresses under-eye dark circles.
- Protects against the negative effects of environmental factors.
- Provides protection against UV rays.
- Forms a barrier on the skin.
- Calms acne and acne scars.
- Prevents the formation of lines and wrinkles.

Main Ingredients: (Comprised of 51 components) PortulacaOleraceaExtract, CamelliaSinensisLeaf Extract, Bambusa Vulgaris Extract, HydrolyzedCollagen, Sodium Hyaluronate, Sodium AcetylatedHyaluronate, HydrolyzedHyaluronicAcid, Asiaticoside, AsiaticAcid, MadecassicAcid, Hexapeptide-9, Tripeptide-29, Acetyl Hexapeptide-8, Bifida Ferment Lysate, PolyglutamicAcid, Carnosine, Glutathione, Nicotinoyl Dipeptide-22, Nicotinoyl Dipeptide-24, Lactobacillus Ferment Lysate Filtrate, Lactobacillus/Collagen Ferment Filtrate, Gold, Peptide Hexapeptide-9, Tripeptide-29, Acetyl Hexapeptide-8, Nicotinoyl Dipeptide-22, Nicotinoyl Dipeptide-24, rh-Oligopeptide-2, Copper Tripeptide-1, sh-Polypeptide-3, and Tetrapeptide-44, Sodium Hyaluronate.



WHO SHOULD CONSIDER UNDERGOING THIS TREATMENT?

- Individuals who have concerns about facial lines.
- Those who struggle to achieve defined lines due to excessive facial oiliness.
- Individuals desiring a bright and firm skin.
- Those aiming for an even and blemish-free skin tone.
- Those looking for a quick lifting effect and radiant skin before a special occasion.



HARMONIZING WITH DS V-LINE TECHNIQUES FOR OPTIMAL RESULTS



Using it with other techniques can lead to great results and happy customers

This technique can be combined with DS MI-LINE massage protocol to enhance circulation, allowing for more effective absorption of the ingredients and accelerating the lifting effect.

When used alongside the Collagen Thread Technique, it offers a faster and more effective solution for wrinkles.

The Hya Thread Volumizing Technique can provide volume and define facial contours, while combining it with the MINTT Mask delivers a powerful lifting effect.



RESULTS

